

The Gherkin  
London, England



GDF SUEZ

BY PEOPLE FOR PEOPLE

# GDF SUEZ in the United Kingdom

Richard Derry,  
GDF SUEZ – Chairman of UK Club Pays

---

# Presenters

Richard Derry

*Chairman of Club Pays*

*GDF SUEZ*

Barry Page

*HR Director*

*GDF SUEZ E&P UK Limited*

Jean Charles-Papeians

*Chairman*

*GDF SUEZ LNG UK Limited*

Steve Riley

*CEO & President UK-Europe*

*International Power GDF SUEZ*

Nigel Carlton

*Managing Director*

*Fabricom GDF SUEZ*

David Palmer-Jones

*Chief Executive Officer*

*Sita UK GDF SUEZ*



# GDF SUEZ in the United Kingdom

## Energy



GDF SUEZ

GDF SUEZ E&P UK

GDF SUEZ

GDF SUEZ LNG

storengy

NU'GEN

## Energy Services



## Environment



# Cofely in the United Kingdom

- **No.1** in district energy
- **Top 3** industrial energy services
- **Top 6** combined energy, technical & facilities services

- £330 million turnover
- 2,500 employees
- 19 regional offices
- 2,300 customers (13,000 sites)
- 12.4 million sq m managed space
- 13 district energy schemes
- > 250 MW of heat & 70 MW CHP
- 143,000 tonnes of CO<sub>2</sub> saved per annum



## District energy to new eco-district

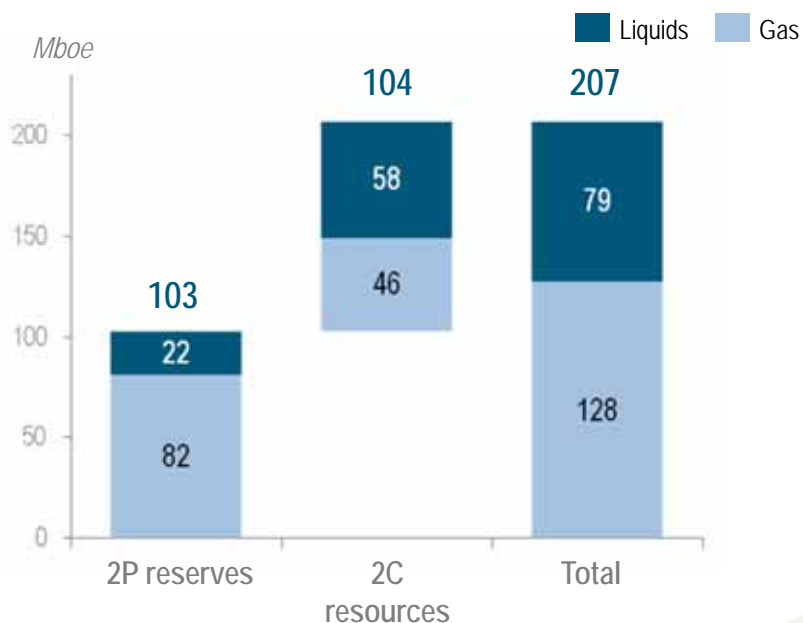
- 40 year concession agreement with the Olympic Delivery Authority and Stratford City
- £100M investment
- 16 km network, 2 energy centres
- Up to 200 MW heating, 64 MW cooling and 30 MW electricity

# Olympic Park and Stratford City

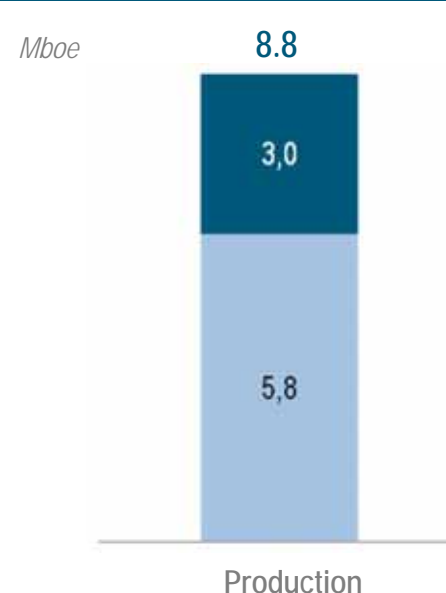


# GDF SUEZ E&P: a presence in the UK built up since 1997

Total reserves and resources of 207 Mboe  
o.w. 62% gas



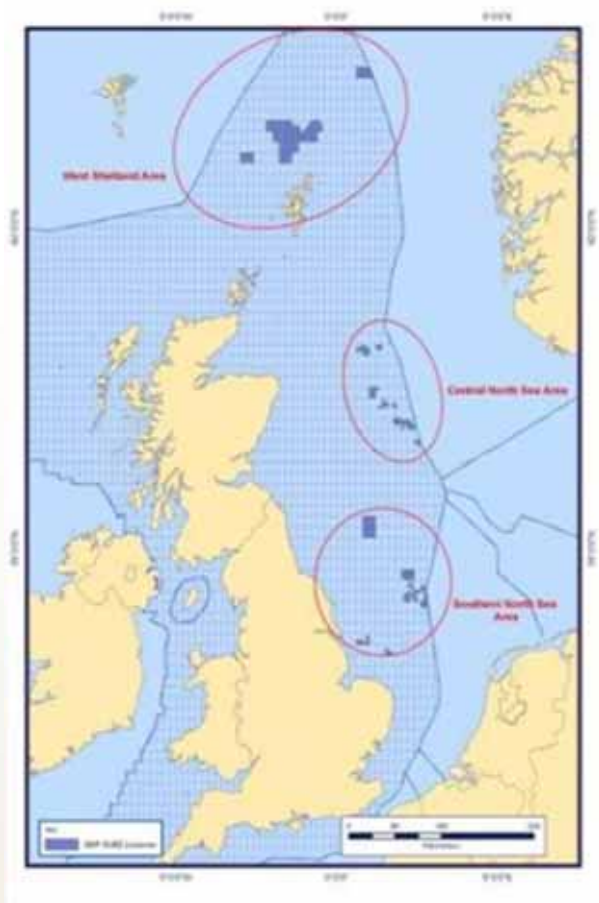
2010 production of ~9 Mboe  
o.w. 66% gas



£1bn invested by GDF SUEZ since 1997

- 10<sup>th</sup> largest holder of gas reserves in UK; Top 7<sup>th</sup> largest UK acreage holder
- More than £1bn to be invested in the current decade provided stable and favourable environment
- GDF SUEZ operates one of the major developments in the UK North Sea : Cygnus; as well as other developments (Juliet, Orca) and an extensive exploration portfolio

Asset portfolio of 16 producing fields and over 45 licenses – Extensive presence in 3 basins, operator of 16 licenses, 7 new licenses awarded to GDF SUEZ in UK 26<sup>th</sup> bid round in May 2011



### West of Shetland Exploration

- Targeting high-impact gas plays
- First exploration well scheduled for 2012

### Central North Sea

- Jacqui discovery
- Extensive high-profile exploration portfolio

### Southern North Sea

- Cygnus development
- Several smaller-scale developments:  
Orca, Juliet, Harrison

Main locations: London and Aberdeen  
110 staff, with the support of contractors

# GDF SUEZ LNG UK LTD

- Within the fully-integrated LNG Business Unit (GDF SUEZ LNG) located both in Paris and in London, GDF SUEZ LNG UK LTD is responsible for the Business Development and also includes Strategy and Prospecting activities for the Group's LNG business. Main current projects include:
  - **PROJECT - AUSTRALIA: Bonaparte LNG**
    - ✓ An integrated project, from upstream LNG to commercialisation.
    - ✓ Pre-FEED Study on project configuration under progress.
    - ✓ A proposed 2 mtpa floating liquefaction plant (FPSO).
    - ✓ PARTNERS (joint-venture) GDF SUEZ 60% / SANTOS 40%
  - **PROJECT - CAMEROON: Cameroon LNG**
    - ✓ An on-shore LNG liquefaction plant located south of Cameroon (Kribi's area).
    - ✓ Pre-FEED Study on project configuration under progress.
    - ✓ Nameplate capacity up to 3.5 mtpa.
    - ✓ PARTNERS GDF SUEZ and Société Nationale des Hydrocarbures (SNH).
  - **PROJECT - CHINA : SRV Cape Ann**
    - ✓ Sub-Chartering of the Vessel for 3 to 5 years to CNOOC



# International Power in UK

## – Key Figures (2010)

- Revenue £3.1bn Employees ~951FTE

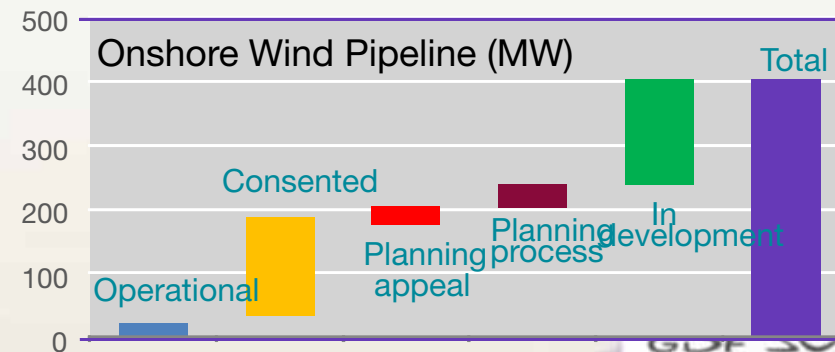
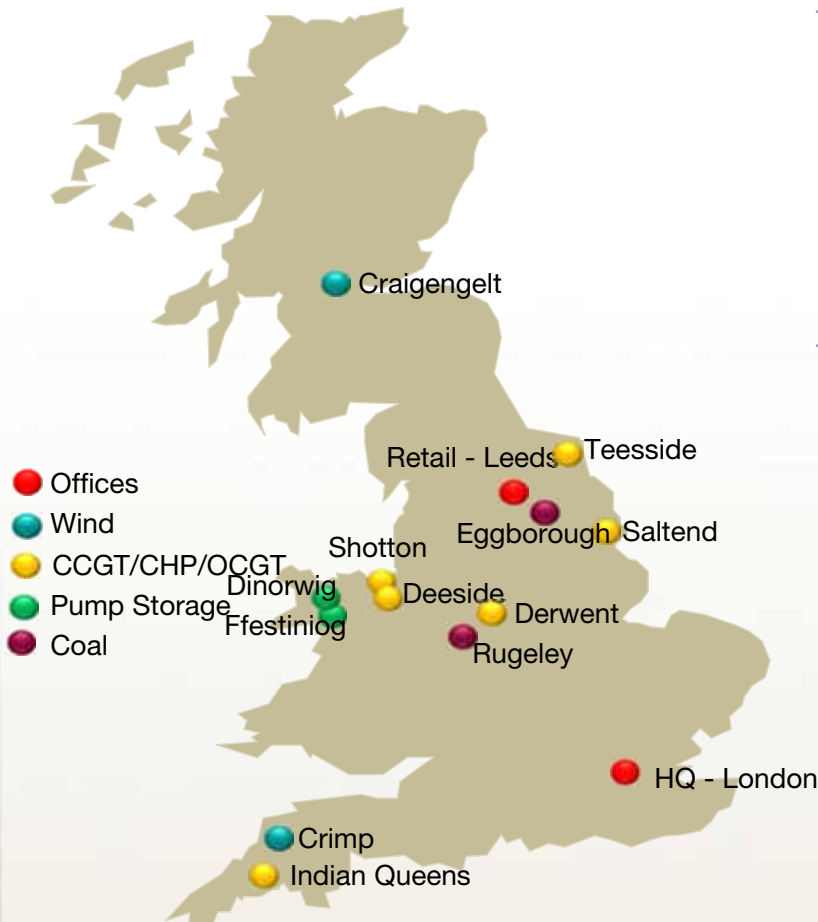
## – Key Facts (2010)

- Installed Capacity 6,068MW net investment based on ownership
- Electricity Generation 24.5TWh from controlled assets
- Retail business focused on B2B sector

Retail	Power	Gas
Sales (TWh)	12	22
Sites ('000)	5	9
Customers ('000)	1.3	0.9

## – Ambition

- Delivering the new enlarged organisation and achieving synergies
- Achieving operational excellence for our generation assets, improving efficiency and flexibility
- Developing our retail business, providing innovative commercial services and organic growth in the business accounts sector
- Growing our renewable generation through potential biomass conversion, developing our wind pipeline, and continuing development of a major tidal project



# Fabricom GDF SUEZ - UK



## Part of GDF SUEZ Energy Services

### Fabricom GDF SUEZ (UK)

Part of the Fabricom Oil Gas & Power Group.

- One of UK's the leading multi-disciplined engineering, project management and construction organisations. We provide services to the oil, gas and power industries.



### • Key information:

- 650 – 1000 employees (including 180 Engineers)
- 2010 turnover €77 to €95m

### Projects - 2009-2011



Power	Oil/Gas/Process
Centrica Langage CCGT Power Station 895 MW	National Grid Grain LNG expansion (to meet 20% of UK gas demand).
EDF West Burton CCGT Power Station 1,300 MW	Ensus Bioethanol Refinery, Teesside (currently largest Biorefinery in Europe).
Runcorn II Thermal Power Station 174 MWth	Langaled - Easington Gas Terminal (linked to the longest sub sea pipeline).



# SITA UK, PART OF SUEZ ENVIRONNEMENT & GDF SUEZ GROUP



→ One of leading waste & recycling companies in the UK

## Key information

- Founded in 1988
- 6,000 employees
- Turnover over £700M

## Services

- Collection
- Pre-treatment/recycling
- Final treatment

## Customers

- Public
- Commercial & Industrial

## Key Challenges

- Building treatment infrastructures to meet legislation/targets
- Financial investments
- Human Resources



GDF SUEZ

BY PEOPLE FOR PEOPLE

Thank you

Questions and Answers